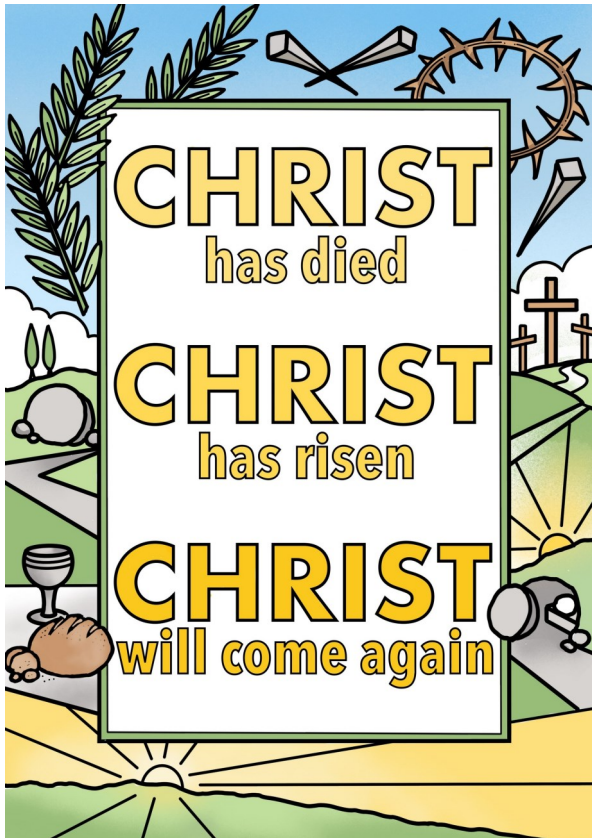


Salem Methodist Church  
Watley's End BS36 1QL

# SALEM NEWS

[www.salemchurch.org.uk](http://www.salemchurch.org.uk)

March 2024



Basically, the whole of March is encompassed by the period of Lent which began with Ash Wednesday on 14 February.

Lent in many ways echoes the 40 day experience of Jesus in the wilderness following his baptism, this was explored in the Gospel reading on the First Sunday of Lent:

And the Spirit immediately drove him out into the wilderness.  
And he was in the wilderness for forty days, tempted by Satan;  
and he was with the wild beasts;  
and the angels waited on him. (Mark 1:12-13)

Forty days summed up in two verses, or four lines.

Matthew and Luke tell us a little more detail, but even from Mark's Gospel we can tell that the time in the wilderness wasn't easy, being tempted by the devil and having wild beasts around him.

We all face challenges in life. We all wander through our own wilderness experiences, times when life is difficult. Our wild beasts are unlikely to be physical animals, but can be many other things, depression, anxiety, grief, struggles with identity, or more commonly in society at the moment financial worries. The list is practically endless. Lent is a way of us finding resources that can help to sustain us through our wilderness journeys.

In Lent we're encouraged to work on our relationship with God, to spend time in the study of Scripture and in prayer, both key parts of the Methodist Way of Life. Through these mechanisms, and through our relationship with Christ, we are able to be sustained in the wilderness times of life.

'and the angels waited on him'.

Part of being the Messiah is that Jesus represented us, his people. In the wilderness Jesus was waited on by the angels, and in our own wilderness journeys, we too have angels around us to hold us up and sustain us. Sometimes they are more obvious than others. Occasionally, God might also call us to be an angel for someone else in need too.

So, this Lent, study the Scripture, spend time talking with God in prayer, build your relationship with Christ, and if you're walking through the wilderness at this time look for the angels around you. If you're not in the wilderness, look out for where you could be an angel for someone else.

A handwritten signature in black ink, appearing to read 'heigh' with a horizontal line underneath.

*Lester Amann considers the little donkey...*

## **Why we should be like donkeys**

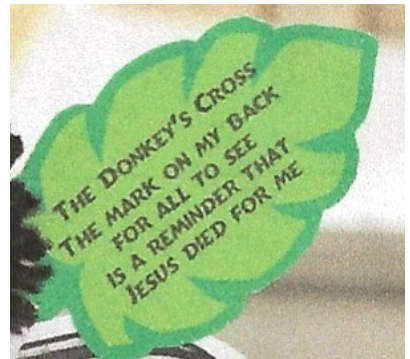
Are you a pet-lover? Many people own a dog, a cat or a budgie, but most of us don't own a donkey! Yet in Bible times, donkeys were essential to daily life. They did everything from helping to grind corn, to ploughing, to carrying people, to transporting their belongings. Despite their small frame, donkeys are surprisingly tough. They can survive on poor fodder, can travel an average of 20 miles a day.

There are two occasions in the Christian calendar where donkeys walk into the picture. At Christmas, Mary travelled the 100 miles from Nazareth to Bethlehem on a donkey. And although a donkey doesn't get a specific mention in the manger story, that same one that transported her was probably there; where else would it have been?

On Palm Sunday Jesus entered Jerusalem riding on a donkey. Jesus deliberately chose this animal rather than a horse. Why? In Bible times, the horse was associated with war, conquest and worldly might. But the donkey was a symbol of peace and humility. So, Jesus used this animal to show that He had come with the dignity of the king of peace. His entry into the Holy City also fulfilled Zechariah's prophecy concerning the Messiah.

Donkeys are hardworking and undemanding. They wait for their master to put them to the work He has chosen for them. And, remarkably, each one bears the mark of the Cross on their backs!

Perhaps that is something we should learn—to wait for Jesus our Master, to be always obedient to Him, to serve Him with all our hearts, and to bear the mark of His grace in our lives.



## Please join us for our regular activities

**Wednesday 6th** Coffee morning at 10 a.m.

*Enjoy friendship and fellowship with your cuppa*



**Tuesday 12th** Film afternoon at 2 p.m.



*A moving story of a girl who hid her brother in a bedroom cupboard when the police came to arrest Jewish families*

**Saturday 16th** Bacon Butty morning at 10 a.m.

*Toasted teacakes on offer as well as tea/coffee*



**Tuesday 26th**



Women's Fellowship at  
2.30p.m.

### Lent Lunches

This year the Lent lunches will be provided by various churches in the Together 4Fromeside area. Please support where you are able.

Donations for the lunch will be made to various charities chosen by the churches

In February the lunches were at St. Saviours and All saints

March 1st Zion

March 8th Salem

### LENT STUDY GROUP

This group will meet every Wednesday at 7.30 at 47 Star Barn Road

The course will look at six people who witnessed the crucifixion -

**The centurion**

**The criminal**

**Joseph of Arimathea**

**Mary**

**Thaddeus**

**Martha**

Judas betrayed Jesus,  
Peter denied Jesus,  
Thomas doubted Jesus:  
Jesus died for them.

Pilate rejected Jesus,  
Herod taunted Jesus,  
Caiaphas framed Jesus:  
Jesus died for them.

The soldiers crucified Jesus,  
the disciples deserted Jesus,  
the people laughed at Jesus:  
Jesus died for them.

Mary wept for Jesus,  
the women anointed Jesus,  
Joseph buried Jesus:  
Jesus rose for them.

We have doubted Jesus,  
we have denied Jesus,  
we rejected Jesus:  
but Jesus died for us.

### A few quotes to ponder

People are like tea bags – you have to put them in hot water before you know how strong they are. – *Anon*

Adversity does not make us frail; it only shows us how frail we are. – *Anon*

God only asks you to do your best.

If it's true that we are here to help others, what are the others doing here?

I hate it when I see an old person, and then realize we went to school together.

He suffered not as God, but He who suffered was God. – *John Owen*

If you're headed in the wrong direction, God allows U-turns. – *Anon*

*The cross is a picture of violence, yet the key to peace;  
a picture of suffering, yet the key to healing;  
a picture of death, yet the key to life;  
a picture of utter weakness, yet the key to power;  
a picture of capital punishment, yet the key to mercy and forgiveness;  
a picture of vicious hatred, yet the key to love;  
a picture of supreme shame, yet the Christian's supreme boast.*



## WORLD DAY PRAYER 2024

The service will be held  
at Zion  
on Friday March 1st at 10.30 a.m

The service for this year has been prepared by the women of Palestine and so it is especially poignant

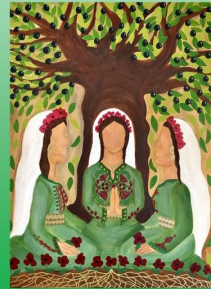
The T4F Lent Lunch will be served at Zion on that day



World Day of  
Prayer 2024

Palestine

'I beg you to bear with one another'



This used to be called the WOMEN'S World Day of prayer,  
BUT now it is THE WORLD DAY OF PRAYER.

The service is prepared by women , but is for EVERYONE

Please join in the service and, perhaps, stay for Lunch

## HOLY WEEK AT SALEM

- |            |            |  |
|------------|------------|--|
| March 27th | 7.30p.m.   | Last of Lenten Study groups                                |
| March 28th | 7.30p.m.   | Maundy Thursday Communion meal<br>(Agape) Numbers required |
| March 29th | 10.30a.m.  | Good Friday reflections                                    |
| March 30th | 4 p.m.     | Children's Easter Egg Hunt and activities                  |
| March 31st | 10.30 a.m. | Easter Sunday Communion<br>with cross of flowers           |

# Prayer Diary for March

## 6th

Church	The vestry - stewards
Offices of the church	Treasurer & admin
Church membership	F
Church connections	Churches Together for Fromeside
World wide church	Morocco

## 13th

Church	Kitchen - all who provide & serve drinks & refreshments after services
Offices of the church	Worship leaders
Church membership	G
Church connections	Leigh's other churches: Yate, Shortwood
World wide church	Mali

## 20th

Church	Hall & rooms - the various meetings & groups who use them
Offices of the church	Preachers
Church membership	H & I
Church connections	North East cluster:
World wide church	Qatar

## 27th

Church	Pulpit - preachers & ministers
Offices of the church	Minister
Church membership	J & K
Church connections	Bristol & South Glos Methodist Circuit
World wide church	Colombia

## Preachers for March 2024

## Flowers

3rd	Rev Malcolm Strange HC T4F pulpit swap	Angela Jeffery
10th	Mr Adam Biddlestone	Linda Lewis
17th	Mrs Val Lamont 4 p.m. Annual Church meetig	Elizabeth Rogers
24th	Ms Naomi Sharp	Sally Ayres & June Ray
3st	EASTER DAY Rev Leigh Maydew (S)	Michael Philips

### Annual Church Meeting

**4 p.m. on Sunday March 17th**

Everyone is invited to this meeting.  
The life of the church will reviewed  
and the new Mission Action Plan  
will be considered

**Your ideas are important**

The afternoon will include  
communion and tea



### Minister

**Revd. Leigh Maydew**

**Tel : 07388 083488**

**Email [leigh.maydew@methodist.org.uk](mailto:leigh.maydew@methodist.org.uk)**